

MONUMENT PLACE

*24 Monument Street EC3
6,493 - 75,487 sq ft of brand new Grade A offices*



Location

Located in the core of the City, this new development provides 75,000 sq ft of highly specified, Grade A office space over 9 upper floors, rated BREEAM 'Excellent'.

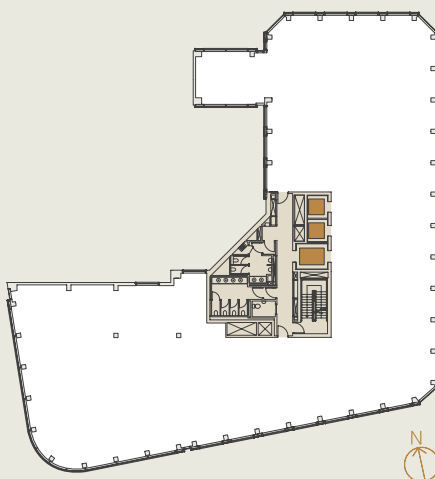
With light on all sides, the building benefits from views of the River Thames and St Magnus Church to the south and the Monument, together with its re-landscaped plaza to the north.

Schedule of Areas

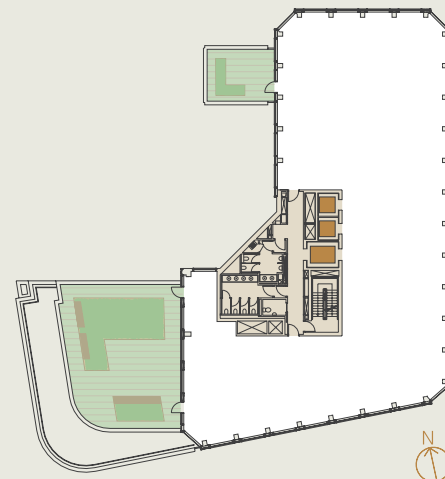
Floor	Sq ft	Sq m
9th Floor	6,614	615
8th Floor	6,493	603
7th Floor	6,904	641
6th Floor	6,904	641
5th Floor	8,893	826
4th Floor	9,836	914
3rd Floor	9,827	913
2nd Floor	9,827	913
1st Floor	6,613	614
Ground (reception)	2,029	189
Ground (office)	284	26
Lower Ground (storage)	711	66
Basement (storage)	552	51
TOTAL	75,487	7,012



Typical Mid-rise Floor



6th Floor



Summary Spec

- Double height reception with feature portico
- Air conditioning – Fan coil VRF system
- Raised floors – 150mm gross
- Metal plank suspended ceilings
- LG7 lighting
- Full height double glazing
- Terraces on 5th and 6th floors
- Three lifts – 2 x 13 person and 1 x 21 person
- Planning grid – 1.5m
- Occupational rates – 1:10 on all floors, 1:8 can be achieved on 2 floors
- Loading bay
- 44 bicycle spaces
- Five showers with changing areas and lockers
- Standby generator with 400 KVA surplus for tenants' use
- Space allocated on roof for tenants' satellite system, split units and additional standby generator capability
- BREEAM 'Excellent' rating
- EPC Rating 30

Viewing & Further Information

By arrangement with the joint agents.



Chris Sutcliffe
crs@newtonperkins.com
+44 (0)20 7456 0706

David Alcock
dsa@newtonperkins.com
+44 (0)20 7456 0707

Jonathan Beilin
jb@newtonperkins.com
+44 (0)20 7456 0727

A development by Charterfield
funded by Rockspring



Peter Gray
Peter.Gray@knightfrank.com
+44 (0)20 7861 1304

Nick Codling
Nick.Codling@knightfrank.com
+44 (0)20 7861 1316

Important notice relating to the Misrepresentation Act 1967 and the Property Misdescriptions Act 1991: Knight Frank and Newton Perkins LLP, on their behalfs and for the sellers or lessors of this property whose agents they are, give notice that: (i) the particulars are set out as a general outline only for guidance of intending purchasers or lessees and do not constitute, nor constitute part of, an offer or contract (ii) all descriptions, dimensions, references to condition and necessary permission for use and occupation, and other details are given in good faith and are believed to be correct, but any intending purchasers or occupiers should not rely on them as statements or representations of fact, but must satisfy themselves by inspection or otherwise as to the correctness of each of them (iii) no person employed by the agents has any authority to make or give any representation or warranty whatever in relation to this property. November 2013. Designed by Wordsearch.